

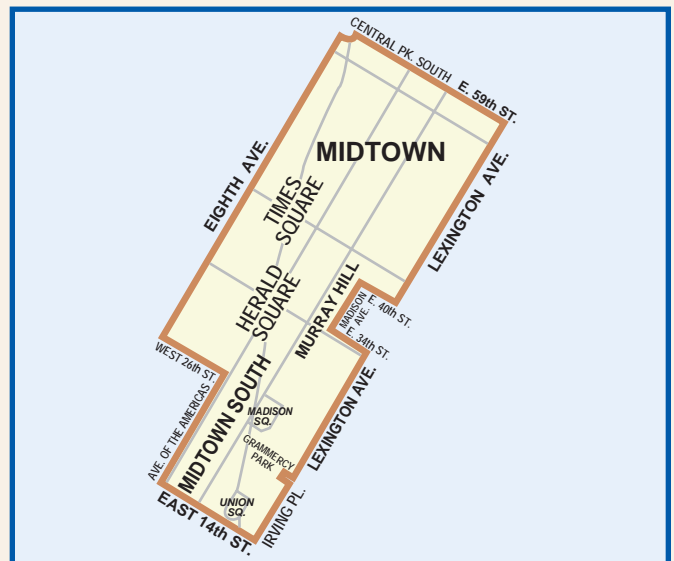
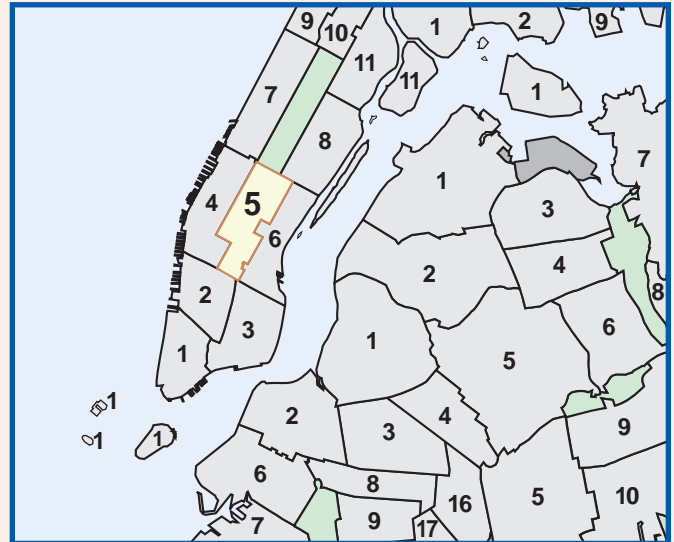
MANHATTAN COMMUNITY DISTRICT 5

TOTAL POPULATION	1980	1990	2000
Number	39,543	43,507	44,028
% Change	—	10.0	1.2

VITAL STATISTICS	2000	2004
Births: Number	436	481
Rate per 1000	9.9	10.9
Deaths: Number	283	266
Rate per 1000	6.4	6.0
Infant Mortality: Number	2	3
Rate per 1000	4.6	6.2

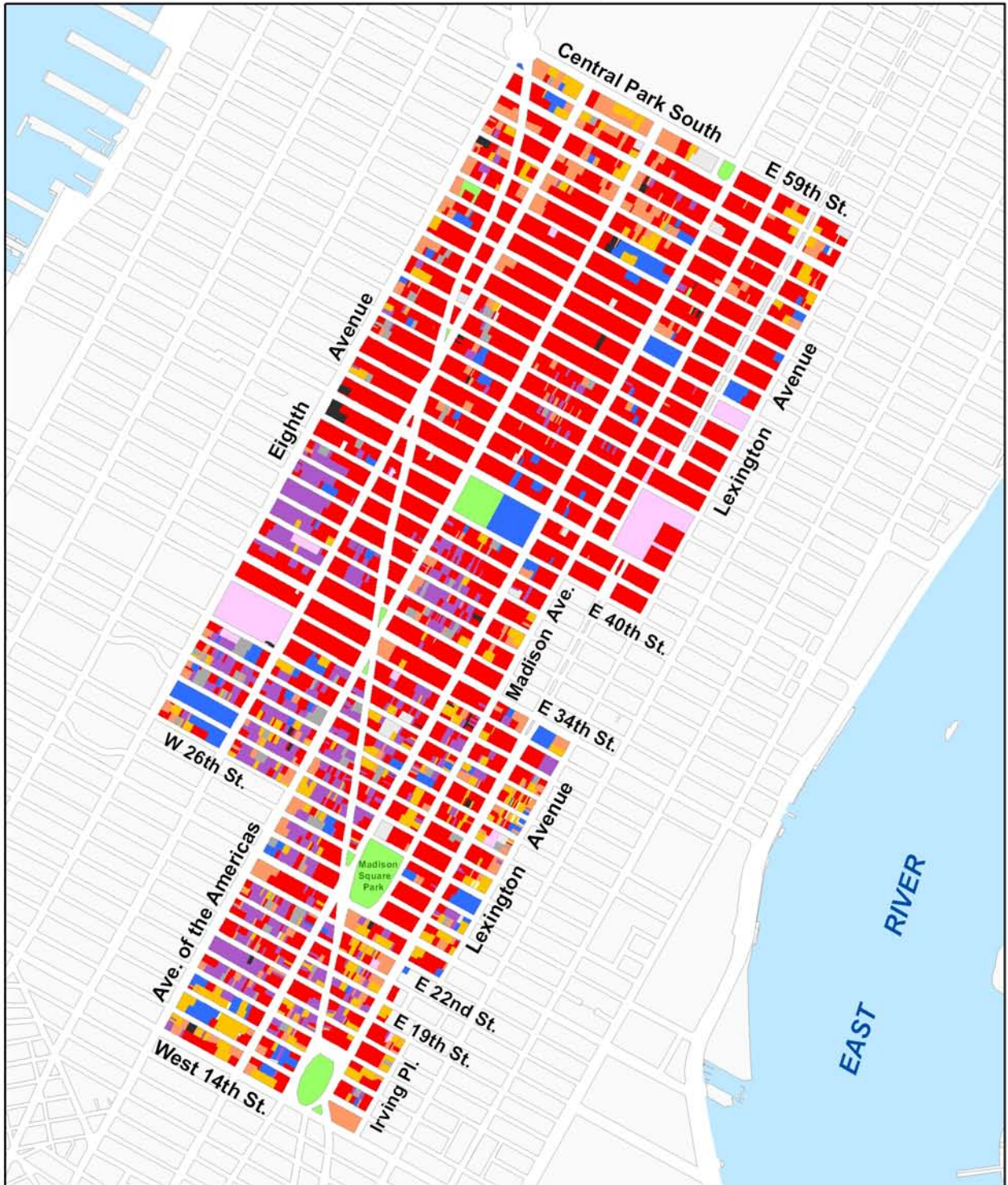
INCOME SUPPORT	2000	2006
Public Assistance (AFDC, Home Relief)	1,452	1,241
Supplemental Security Income	1,289	1,325
Medicaid Only	1,188	2,563
Total Persons Assisted	3,929	5,129
Percent of Population	8.9	11.6

TOTAL LAND AREA		
	Acres:	1,046.4
	Square Miles:	1.6



	Lots	Lot Area	
		Sq. Ft.(000)	%
1- 2 Family Residential	14	23.3	0.1
Multi-Family Residential	307	1,862.1	6.5
Mixed Resid. / Commercial	397	2,031.9	7.1
Commercial / Office	1,628	17,347.1	60.4
Industrial	571	2,926.4	10.2
Transportation / Utility	19	872.1	3.0
Institutions	110	1,668.5	5.8
Open Space / Recreation	12	948.4	3.3
Parking Facilities	94	708.2	2.5
Vacant Land	81	306.1	1.1
Miscellaneous	32	15.2	0.1
Total	3,265	28,709.3	100.0

Manhattan Community District 5



© Copyright 2007
 NYC Department of City Planning

Source: MapPLUTO™ Release 06C

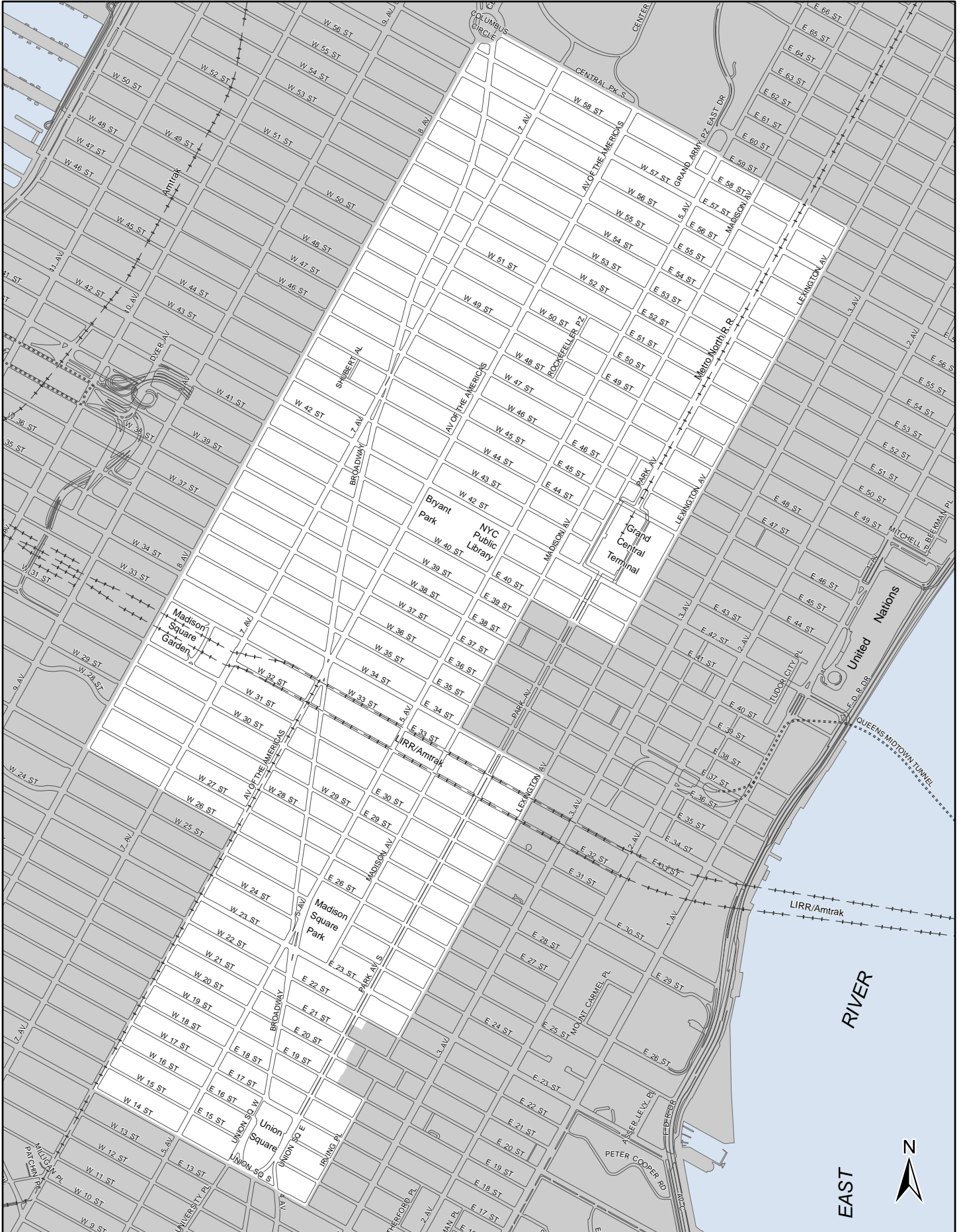
Residential Land Uses

- One & Two Family Buildings
- Multi-Family Buildings
- Mixed Residential and Commercial Buildings

Non-Residential Land Uses

- Commercial / Office Buildings
- Industrial / Manufacturing
- Open Space and Outdoor Recreation
- Public Facilities and Institutions
- Transportation and Utility
- Parking Facilities
- Vacant Land
- All Others or No Data

Manhattan Community District 5



**Table PL P-103: Total Population by Mutually Exclusive Race and Hispanic Origin
and Total Housing Units
New York City Community Districts, 1990 and 2000**

Manhattan Community District 5	1990		2000		Change 1990-2000	
	Number	Percent	Number	Percent	Number	Percent
Total Population	43,507	100.0	44,028	100.0	521	1.2
Nonhispanic of Single Race:	-	-	-	-	-	-
White Nonhispanic	32,442	74.6	31,813	72.3	(629)	-1.9
Black/African American Nonhispanic	3,528	8.1	1,948	4.4	(1,580)	-44.8
Asian or Pacific Islander Nonhispanic	3,213	7.4	6,143	14.0	2,930	91.2
American Indian and Alaska Native Nonhispanic	78	0.2	52	0.1	(26)	-33.3
Some Other Race Nonhispanic	86	0.2	141	0.3	55	64.0
Nonhispanic of Two or More Races	-	-	967	2.2	-	-
Hispanic Origin	4,160	9.6	2,964	6.7	(1,196)	-28.8
Population Under 18 Years	2,534	100.0	2,839	100.0	305	12.0
Nonhispanic of Single Race:	-	-	-	-	-	-
White Nonhispanic	1,658	65.4	1,676	59.0	18	1.1
Black/African American Nonhispanic	255	10.1	309	10.9	54	21.2
Asian or Pacific Islander Nonhispanic	242	9.6	362	12.8	120	49.6
American Indian and Alaska Native Nonhispanic	6	0.2	3	0.1	(3)	-50.0
Some Other Race Nonhispanic	17	0.7	18	0.6	1	5.9
Nonhispanic of Two or More Races	-	-	141	5.0	-	-
Hispanic Origin	356	14.0	330	11.6	(26)	-7.3
Population 18 Years and Over	40,973	100.0	41,189	100.0	216	0.5
Nonhispanic of Single Race:	-	-	-	-	-	-
White Nonhispanic	30,784	75.1	30,137	73.2	(647)	-2.1
Black/African American Nonhispanic	3,273	8.0	1,639	4.0	(1,634)	-49.9
Asian or Pacific Islander Nonhispanic	2,971	7.3	5,781	14.0	2,810	94.6
American Indian and Alaska Native Nonhispanic	72	0.2	49	0.1	(23)	-31.9
Some Other Race Nonhispanic	69	0.2	123	0.3	54	78.3
Nonhispanic of Two or More Races	-	-	826	2.0	-	-
Hispanic Origin	3,804	9.3	2,634	6.4	(1,170)	-30.8
Total Population	43,507	100.0	44,028	100.0	521	1.2
Under 18 Years	2,534	5.8	2,839	6.4	305	12.0
18 Years and Over	40,973	94.2	41,189	93.6	216	0.5
Total Housing Units	30,436	-	30,588	-	152	0.5

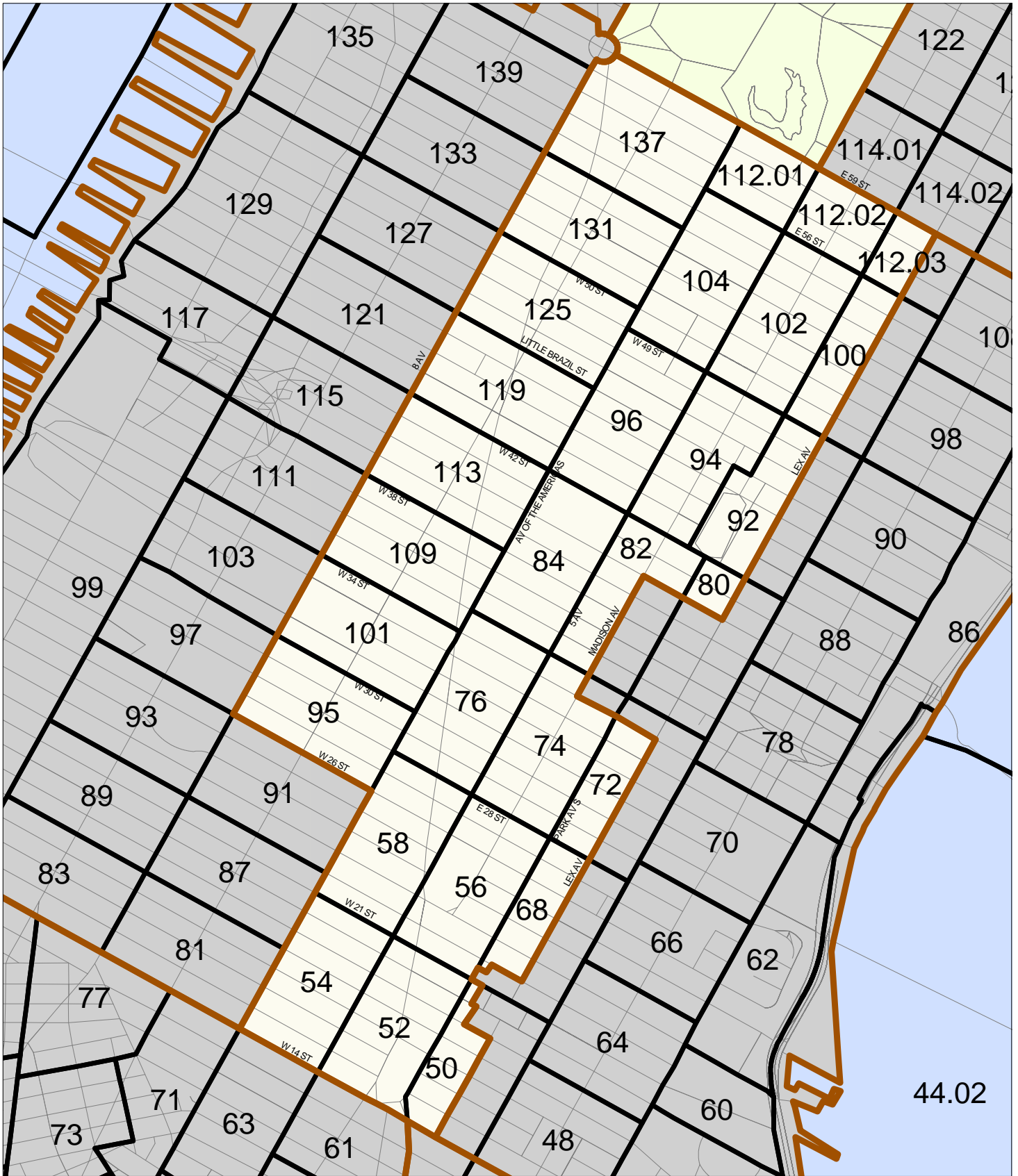
Race categories are from the 2000 Census and are not strictly comparable with categories used in 1990.

Source: U.S. Census Bureau, 2000 Census PL File and SF1 and 1990 Census STF1
Population Division - NYC Department of City Planning (Oct 2001)

**Demographic Profile - New York City Community Districts
2000 Census SF1**

Manhattan Community District 5	Number	Percent
Total Population	44,028	100.0
White Nonhispanic	31,813	72.3
Black Nonhispanic	1,948	4.4
Asian and Pacific Islander Nonhispanic	6,143	14.0
Other Nonhispanic	193	0.4
Two or More Races Nonhispanic	967	2.2
Hispanic Origin	2,964	6.7
Female	22,500	51.1
Male	21,528	48.9
Under 5 years	1,184	2.7
5 to 9 years	703	1.6
10 to 14 years	618	1.4
15 to 19 years	1,734	3.9
20 to 24 years	5,137	11.7
25 to 44 years	19,932	45.3
45 to 64 years	10,103	22.9
65 years and over	4,617	10.5
18 years and over	41,189	93.6
In households	39,859	90.5
In family households	15,760	35.8
Householder	6,392	14.5
Spouse	5,220	11.9
Own child under 18 years	2,328	5.3
Other relatives	1,500	3.4
Nonrelatives	320	0.7
In nonfamily households	24,099	54.7
Householder	19,413	44.1
Householder 65 years and over living alone	2,533	5.8
Nonrelatives	4,686	10.6
In group quarters	4,169	9.5
Total Households	25,805	100.0
Family households	6,392	24.8
Married-couple family	5,220	20.2
With related children under 18 years	1,288	5.0
Female householder, no husband present	759	2.9
With related children under 18 years	324	1.3
Male householder, no wife present	413	1.6
With related children under 18 years	98	0.4
Nonfamily households	19,413	75.2
Households with one or more persons 65 years and over	3,826	14.8
Persons Per Family	2.42	-
Persons Per Household	1.54	-
Total Housing Units	30,588	-
Occupied Housing Units	25,805	100.0
Renter occupied	19,341	75.0
Owner occupied	6,464	25.0
By Household Size:		
1 person household	15,485	60.0
2 person household	7,830	30.3
3 person household	1,581	6.1
4 person household	688	2.7
5 persons and over	221	0.9
By Age of Householder:		
15 to 24 years	1,796	7.0
25 to 44 years	13,172	51.0
45 to 64 years	7,258	28.1
65 years and over	3,579	13.9

CENSUS 2000: MANHATTAN COMMUNITY DISTRICT 5



LEGEND	4	CENSUS TRACT NUMBER	—	STREET	—	COMMUNITY DISTRICT BOUNDARY
	—	CENSUS TRACT BOUNDARY	READE ST.	STREET NAME		

**Change in Total Population, 1990 to 2000
Manhattan Community District 5**

Census Tract	Total Population		Population Change, 1990-2000	
	1990	2000	Number	Percent
0050 *	5,455	5,695	240	4.4
0052	3,204	3,741	537	16.8
0054	3,929	3,955	26	0.7
0056	2,153	2,577	424	19.7
0058	665	659	(6)	(0.9)
0068 *	6,203	6,753	550	8.9
0072 *	7,435	8,111	676	9.1
0074*	3,367	3,712	345	10.2
0076	1,759	2,493	734	41.7
0080 *	5,289	5,392	103	1.9
0082 *	2,565	2,764	199	7.8
0084	696	1,041	345	49.6
0092 *	1,463	1,334	(129)	(8.8)
0094	75	51	(24)	(32.0)
0095	2,678	2,694	16	0.6
0096	151	210	59	39.1
0100 *	1,663	1,822	159	9.6
0101	1,233	239	(994)	(80.6)
0102	320	269	(51)	(15.9)
0104	1,179	1,097	(82)	(7.0)
0109	290	208	(82)	(28.3)
011201	947	1,041	94	9.9
011202	445	380	(65)	(14.6)
011203 *	1,186	1,255	69	5.8
0113	1,296	322	(974)	(75.2)
0119	2,005	1,405	(600)	(29.9)
0125	968	1,762	794	82.0
0129	3,619	4,457	838	23.2
0131	2,270	2,086	(184)	(8.1)
0137	7,049	6,797	(252)	(3.6)

* Census tract is within two or more community districts. Data are for entire census tract.

**Total Population by Mutually Exclusive Race and Hispanic Origin
by Census Tract, 2000
Manhattan Community District 5**

Census Tract	Total Population	Nonhispanic by Race					Two or More Races	Hispanic Origin (of any race)
		Single Race						
		White	Black/ African American	Asian	Other			
0050 *	5,695	4,615	72	617	21	107	263	
0052	3,741	2,906	129	429	16	60	201	
0054	3,955	3,170	170	328	15	66	206	
0056	2,577	1,859	194	253	7	60	204	
0058	659	544	14	56	1	17	27	
0068 *	6,753	4,970	450	640	31	140	522	
0072 *	8,111	6,713	101	821	35	124	317	
0074*	3,712	2,881	243	321	18	75	174	
0076	2,493	1,069	92	1,134	13	59	126	
0080 *	5,392	4,495	70	497	12	63	255	
0082 *	2,764	2,305	45	233	6	35	140	
0084	1,041	506	40	415	4	26	50	
0092 *	1,334	919	65	207	7	30	106	
0094	51	30	3	4	10	1	3	
0095	2,694	1,933	137	300	22	88	214	
0096	210	101	4	80	2	8	15	
0100 *	1,822	1,480	12	180	8	25	117	
0101	239	157	20	30	0	6	26	
0102	269	241	0	6	0	2	20	
0104	1,097	909	25	94	3	15	51	
0109	208	97	12	68	0	8	23	
011201	1,041	858	41	78	3	13	48	
011202	380	316	3	18	0	3	40	
011203 *	1,255	1,057	15	81	4	15	83	
0113	322	179	33	39	1	20	50	
0119	1,405	761	287	98	15	58	186	
0125	1,762	1,023	101	354	26	44	214	
0129	4,457	2,341	419	345	17	159	1,176	
0131	2,086	1,393	80	234	20	53	306	
0137	6,797	5,398	112	758	19	130	380	

* Census tract is within two or more community districts. Data are for entire census tract.

**Total Households by Household Family Type
by Census Tract, 2000
Manhattan Community District 5**

Census Tract	Total Households	Total Family Households	Total Non-Family Households	Average Household Size	Average Family Size
0050 *	3,625	885	2,740	1.48	2.40
0052	1,706	480	1,226	1.66	2.53
0054	2,440	616	1,824	1.54	2.48
0056	1,522	408	1,114	1.53	2.35
0058	381	115	266	1.72	2.74
0068 *	4,367	840	3,527	1.46	2.37
0072 *	4,922	1,101	3,821	1.60	2.31
0074*	2,138	384	1,754	1.41	2.28
0076	1,558	362	1,196	1.59	2.65
0080 *	3,482	869	2,613	1.45	2.36
0082 *	1,931	456	1,475	1.43	2.31
0084	626	165	461	1.62	2.42
0092 *	907	196	711	1.39	2.26
0094	31	10	21	1.65	2.60
0095	828	232	596	1.77	2.64
0096	116	32	84	1.77	2.66
0100 *	1,247	289	958	1.45	2.39
0101	83	14	69	1.66	2.50
0102	147	50	97	1.71	2.64
0104	735	200	535	1.48	2.25
0109	113	39	74	1.81	2.51
011201	664	188	476	1.49	2.34
011202	237	94	143	1.60	2.31
011203 *	848	239	609	1.48	2.39
0113	77	8	69	2.39	2.50
0119	1,070	58	1,012	1.18	2.43
0125	1,116	293	823	1.52	2.30
0129	2,327	610	1,717	1.80	2.90
0131	1,400	276	1,124	1.48	2.36
0137	4,363	1,304	3,059	1.56	2.35

* Census tract is within two or more community districts. Data are for entire census tract.

**Age and Nativity
by Census Tract, 2000
Manhattan Community District 5**

Census Tract	Total Population	% under 18	% 18 to 64	% 65 and over	% Foreign Born
0050 *	5,695	6.4	83.7	9.9	18.1
0052	3,741	7.0	87.8	5.2	14.9
0054	3,955	10.7	80.4	8.9	16.4
0056	2,577	10.9	84.4	4.7	20.6
0058	659	12.7	81.3	5.9	24.9
0068 *	6,753	4.7	87.2	8.1	20.4
0072 *	8,111	4.0	87.4	8.6	19.6
0074*	3,712	5.8	86.3	7.9	19.0
0076	2,493	6.6	88.8	4.6	53.7
0080 *	5,392	5.4	78.7	15.9	23.9
0082 *	2,764	4.4	78.2	17.4	21.2
0084	1,041	5.3	89.8	4.9	57.7
0092 *	1,334	3.7	85.5	10.7	34.5
0094	51	5.9	64.7	29.4	0.0
0095	2,694	5.4	92.1	2.5	13.3
0096	210	7.1	80.0	12.9	40.0
0100 *	1,822	5.6	78.2	16.2	29.6
0101	239	2.5	80.8	16.7	28.9
0102	269	10.4	70.6	19.0	16.7
0104	1,097	4.4	73.6	22.1	22.3
0109	208	7.2	87.5	5.3	29.3
011201	1,041	6.5	73.5	20.0	27.0
011202	380	5.5	66.3	28.2	38.2
011203 *	1,255	6.3	70.4	23.3	28.3
0113	322	1.6	96.3	2.2	33.5
0119	1,405	2.1	78.9	19.1	15.1
0125	1,762	4.6	88.6	6.8	38.0
0129	4,457	11.1	84.9	3.9	26.5
0131	2,086	3.5	74.4	22.1	38.6
0137	6,797	6.0	76.3	17.7	28.4

* Census tract is within two or more community districts. Data are for entire census tract.

**Income and Education
by Census Tract, 2000
Manhattan Community District 5**

Census Tract	Median Household Income	% Persons below Poverty	% Families below Poverty	Population 25 +	% High School Graduates or Higher	% College Graduates or Higher
0050 *	\$71,734	10.8	4.8	4,748	98.2	76.4
0052	\$82,882	7.9	3.9	2,276	98.0	82.2
0054	\$81,696	4.9	0.0	3,377	99.6	84.0
0056	\$85,399	13.0	0.0	2,180	95.9	80.9
0058	\$68,523	6.8	0.0	495	93.9	76.8
0068 *	\$52,442	12.7	0.7	5,508	94.4	72.8
0072 *	\$75,097	8.1	2.8	6,147	97.9	77.5
0074*	\$76,804	8.0	1.3	2,642	96.1	76.5
0076	\$41,276	24.7	22.7	2,057	88.2	59.9
0080 *	\$68,868	9.0	3.0	4,677	98.2	71.9
0082 *	\$62,136	10.0	4.2	2,399	96.7	73.3
0084	\$70,694	16.5	16.7	955	93.3	73.3
0092 *	\$62,375	8.1	5.8	1,226	93.4	66.3
0094	\$15,947	0.0	-	41	100.0	0.0
0095	\$60,993	7.4	5.3	1,336	95.7	70.2
0096	\$60,083	9.5	0.0	168	92.9	72.0
0100 *	\$73,906	4.3	3.9	1,529	94.3	73.1
0101	\$66,786	21.9	0.0	247	76.1	59.9
0102	\$174,119	9.0	9.7	224	94.2	83.9
0104	\$67,500	11.6	3.3	951	95.1	68.9
0109	\$71,641	20.8	0.0	127	100.0	82.7
011201	\$78,354	10.5	16.2	940	95.6	67.3
011202	\$188,697	15.9	12.9	354	100.0	55.1
011203 *	\$77,329	5.0	0.0	1,067	98.3	59.7
0113	\$47,813	41.3	0.0	169	70.4	20.1
0119	\$12,173	42.1	9.3	1,295	73.4	32.4
0125	\$76,099	9.1	3.9	1,491	95.9	71.7
0129	\$52,743	21.9	27.2	3,542	86.9	52.4
0131	\$52,386	15.1	9.3	1,886	91.1	59.9
0137	\$80,934	5.7	3.5	5,913	97.8	72.3

* Census tract is within two or more community districts. Data are for entire census tract.

**Employment Status for Population 16 and Over
by Census Tract, 2000
Manhattan Community District 5**

Census Tract	Population 16+	Number of Persons 16+ in Labor Force	% of Labor Force Unemployed	% of Labor Force Female	% of Labor Force Male
0050 *	5382	4160	4.1	54.1	45.9
0052	3479	2674	16.0	49.0	51.0
0054	3567	2954	3.5	49.1	50.9
0056	2429	2056	3.6	46.1	53.9
0058	562	494	5.1	46.8	53.2
0068 *	6430	4947	4.9	50.2	49.8
0072 *	7833	6325	2.9	52.6	47.4
0074*	3451	2535	5.2	53.3	46.7
0076	2330	1816	3.8	40.4	59.6
0080 *	5095	3727	4.9	52.3	47.7
0082 *	2544	1956	2.6	53.0	47.0
0084	1082	788	5.5	42.1	57.9
0092 *	1298	1076	9.8	43.6	56.4
0094	41	33	0.0	0.0	100.0
0095	2601	2015	29.9	59.7	40.3
0096	168	141	5.0	32.6	67.4
0100 *	1728	1304	1.1	48.3	51.7
0101	247	219	28.8	36.1	63.9
0102	229	158	0.0	32.3	67.7
0104	1038	694	10.5	49.9	50.1
0109	159	85	11.8	38.8	61.2
011201	1021	723	1.4	47.9	52.1
011202	354	206	0.0	33.0	67.0
011203 *	1173	729	1.1	48.6	51.4
0113	288	204	37.3	54.4	45.6
0119	1392	781	20.0	49.9	50.1
0125	1681	1232	3.2	33.8	66.2
0129	4054	2885	5.9	35.0	65.0
0131	2009	1402	7.1	52.9	47.1
0137	6418	4646	2.2	45.8	54.2

* Census tract is within two or more community districts. Data are for entire census tract.

**Selected Housing Characteristics
Total Housing Units & Occupancy Status
by Census Tract, 2000
Manhattan Community District 5**

Census Tract	Total Housing Units	Occupancy Status			
		Total Occupied Housing Units	% Owner Occupied	% Renter Occupied	% Overcrowded**
0050 *	3,812	3,625	39.1	60.9	5.2
0052	1,787	1,706	29.5	70.5	4.1
0054	2,541	2,440	48.5	51.5	4.3
0056	1,615	1,534	37.6	62.4	3.4
0058	739	394	29.7	70.3	13.2
0068 *	4,616	4,367	20.8	79.2	5.8
0072 *	5,285	4,922	20.4	79.6	4.6
0074*	2,340	2,138	20.4	79.6	6.9
0076	1,668	1,579	7.5	92.5	16.0
0080 *	3,884	3,482	36.5	63.5	3.4
0082 *	2,254	1,893	26.8	73.2	4.3
0084	711	636	34.0	66.0	18.9
0092 *	1,099	923	8.1	91.9	4.1
0094	48	25	0.0	100.0	0.0
0095	877	825	27.5	72.5	4.0
0096	129	109	19.3	80.7	8.3
0100 *	1,419	1,246	25.4	74.6	2.0
0101	88	83	0.0	100.0	0.0
0102	270	149	51.7	48.3	0.0
0104	1,111	760	43.0	57.0	3.2
0109	109	98	12.2	87.8	0.0
011201	771	627	12.0	88.0	1.8
011202	527	272	82.4	17.6	4.4
011203 *	1,221	863	39.2	60.8	1.5
0113	72	66	0.0	100.0	12.1
0119	1,184	1,101	0.9	99.1	3.1
0125	1,292	1,090	1.0	99.0	9.9
0129	2,517	2,327	14.4	85.6	10.0
0131	1,941	1,426	7.4	92.6	6.6
0137	5,815	4,363	24.2	75.8	5.2

* Census tract is within two or more community districts. Data are for entire census tract.

** "Overcrowded" units are those with more than one person per room.

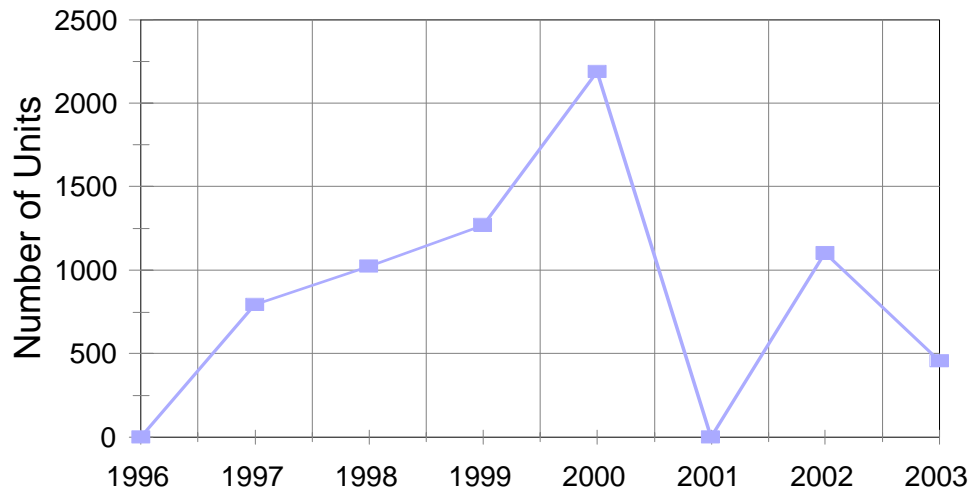
**Selected Housing Characteristics
Number of Units & Age of Structure
by Census Tract, 2000
Manhattan Community District 5**

Census Tract	Total Housing Units	Units in Structure			Age of Structure		
		% 1 & 2 Units	% 3-9 Units	% 10 units or more	% Built 1990 to 2000	% Built 1950 to 1989	% Built before 1950
0050 *	3,812	2.8	8.4	88.7	2.4	55.1	42.5
0052	1,787	1.0	10.9	88.1	14.2	45.9	39.9
0054	2,541	0.0	9.1	90.9	1.4	73.6	25.0
0056	1,615	0.4	4.0	95.5	3.0	53.5	43.5
0058	739	0.9	17.5	81.6	44.2	4.9	50.9
0068 *	4,616	1.0	5.2	93.7	6.7	36.7	56.6
0072 *	5,285	0.8	8.2	91.0	3.1	67.5	29.4
0074*	2,340	0.6	10.0	89.4	18.9	13.7	67.4
0076	1,668	2.4	5.5	92.1	0.5	9.6	89.9
0080 *	3,884	1.4	12.6	86.0	0.0	46.1	53.9
0082 *	2,254	0.3	3.1	96.6	0.3	45.1	54.7
0084	711	0.8	21.2	77.9	3.9	59.2	36.8
0092 *	1,099	0.9	9.9	89.2	0.8	24.5	74.7
0094	48	0.0	16.7	83.3	0.0	60.4	39.6
0095	877	5.1	20.6	74.2	0.0	14.4	85.6
0096	129	9.3	73.6	17.1	0.0	12.4	87.6
0100 *	1,419	1.2	4.6	94.2	0.0	47.9	52.1
0101	88	0.0	60.2	39.8	0.0	71.6	28.4
0102	270	0.0	12.2	87.8	0.0	85.2	14.8
0104	1,111	1.7	10.1	88.2	6.7	37.6	55.7
0109	109	0.0	0.0	100.0	0.0	53.2	46.8
011201	771	0.0	1.4	98.6	0.0	55.4	44.6
011202	527	2.1	2.3	95.6	0.0	48.4	51.6
011203 *	1,221	0.0	3.8	96.2	4.0	64.1	31.9
0113	72	0.0	43.1	56.9	5.6	27.8	66.7
0119	1,184	0.0	12.8	87.2	0.0	15.4	84.6
0125	1,292	1.2	2.7	96.1	67.9	21.2	10.9
0129	2,517	0.3	7.3	92.5	17.1	36.9	46.0
0131	1,941	0.5	0.3	99.2	1.5	46.6	51.9
0137	5,815	0.1	2.4	97.5	3.5	42.9	53.6

* Census tract is within two or more community districts. Data are for entire census tract.

Selected Housing Characteristics
Building Permits Issued For New Residential Construction
Manhattan Community District 5, 1996 - 2003

Total Number of New Housing Units Issued Permits



Permits by Building Size

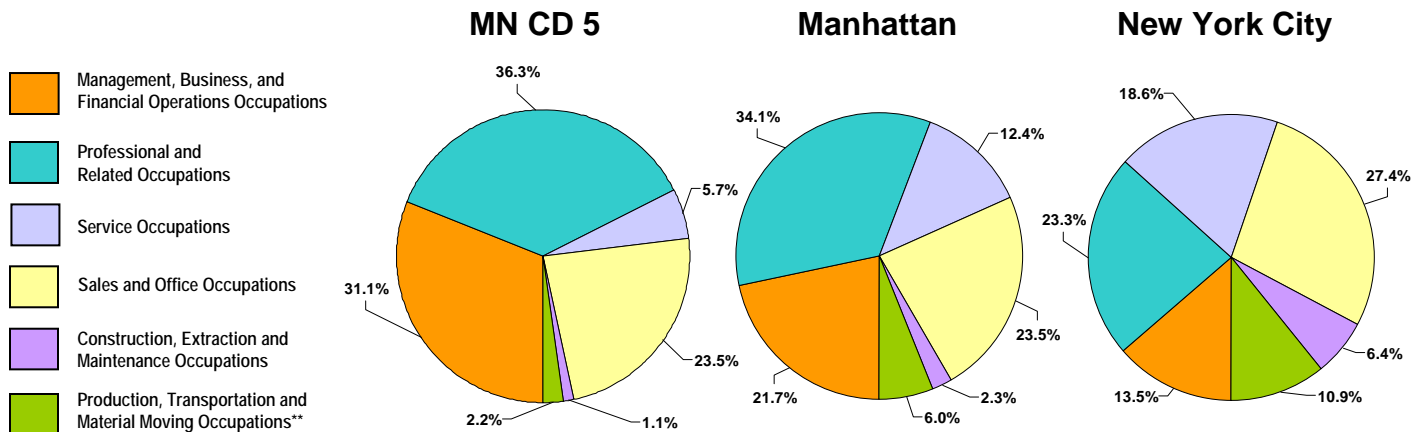
Year	1 & 2 Unit Buildings		3 & 4 Unit Buildings		5+ Unit Buildings		Total Buildings	Total Units
	Buildings	Units	Buildings	Units	Buildings	Units		
1996	0	0	0	0	0	0	0	0
1997	0	0	0	0	2	794	2	794
1998	1	2	1	4	3	1019	5	1025
1999	0	0	0	0	4	1271	4	1271
2000	0	0	0	0	7	2190	7	2190
2001	0	0	0	0	0	0	0	0
2002	1	1	0	0	4	1101	5	1102
2003	0	0	0	0	3	458	3	458

**Selected Employment Characteristics
Occupation for the Employed Civilian Population
by Census Tract, 2000
Manhattan Community District 5**

Census Tract	Total Employed Civilian Population 16 Years & Over by Occupation							
	Total Employed Civilian Population 16 Years and Over	Management, Professional, and Related Occupations:			Service Occupations	Sales and Office Occupations	Construction, Extraction, and Maintenance Occupations	Production, Transportation, and Material Moving Occupations**
		Total	Management, Business, and Financial Operations Occupations	Professional and Related Occupations				
0050*	3,988	2,750	1,422	1,328	170	969	58	41
0052	2,245	1,449	654	795	97	593	11	95
0054	2,850	2,095	946	1,149	82	553	72	48
0056	1,981	1,510	661	849	71	394	0	6
0058	469	350	102	248	33	65	8	13
0068*	4,705	3,175	1,316	1,859	326	1,045	50	109
0072*	6,144	4,252	2,185	2,067	194	1,616	46	36
0074*	2,403	1,596	686	910	107	634	34	32
0076	1,747	975	321	654	242	364	17	149
0080*	3,545	2,443	1,057	1,386	177	843	29	53
0082*	1,906	1,454	721	733	59	344	18	31
0084	745	513	191	322	37	178	4	13
0092*	971	617	372	245	49	264	10	31
0094	33	0	0	0	0	33	0	0
0095	1,413	849	300	549	127	372	20	45
0096	134	58	25	33	17	59	0	0
0100*	1,290	862	507	355	45	367	11	5
0101	156	120	36	84	6	17	0	13
0102	158	82	42	40	8	68	0	0
0104	621	390	149	241	36	195	0	0
0109	75	60	38	22	9	6	0	0
011201	713	492	220	272	45	158	12	6
011202	206	102	84	18	29	66	9	0
011203*	721	571	264	307	20	102	19	9
0113	128	28	16	12	15	49	23	13
0119	625	301	82	219	111	162	8	43
0125	1,193	813	493	320	66	278	0	36
0131	1,303	841	326	515	106	328	16	12
0137	4,544	3,231	1,830	1,401	194	1,019	38	62

*Census tract is within two or more community districts. Data are for entire census tract.

** Includes farming, fishing and forestry occupations.

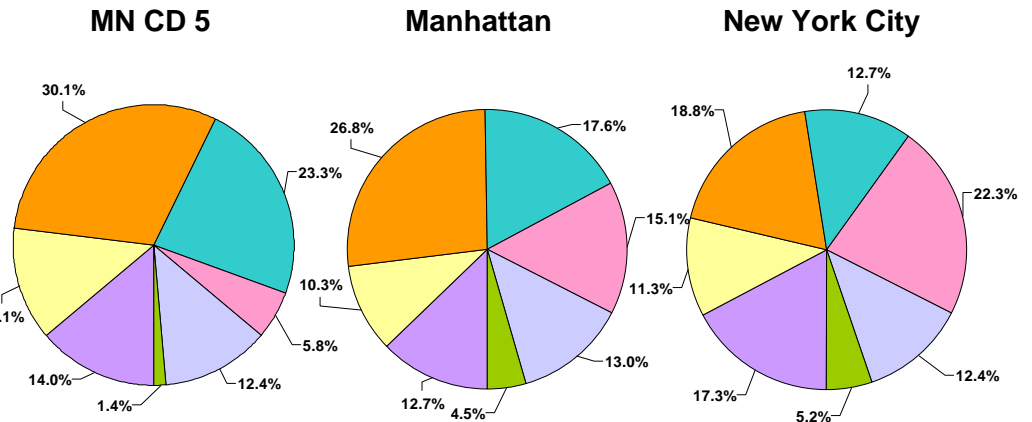


**Selected Employment Characteristics
Total Workers at Place of Work by Industry
by Census Tract, 2000
Manhattan Community District 5**

Census Tract	Workers 16 Years and Over by Industry							
	Total Workers at Place of Work	Agriculture**; Construction; Manufacturing; Transportation and warehousing and utilities	Wholesale trade; Retail trade	Information; Finance, insurance, real estate and rental and leasing	Professional, scientific, management, administrative, and waste management services	Educational, health and social services	Arts, entertainment, recreation, accommodation and food services; Other services (except public administration)	Public administration; Armed forces
0050*	12,515	3630	580	1485	2125	1985	2085	625
0052	22,250	2,445	3,290	3,720	5,985	2,105	4,480	220
005	18,985	1,695	3,640	3,770	5,360	1,820	2,600	100
0056	29,535	2,150	2,355	14,260	5,550	1,810	2,765	645
0058	20,350	3,235	3,635	3,410	5,800	1,555	2,565	145
0068*	12,560	1,440	1,020	2,775	1,755	3,140	2,325	105
0072*	13,150	1,710	1,065	3,015	4,115	1,300	1,760	175
0074*	27,200	5,370	4,730	5,315	6,340	2,655	2,575	215
0076	29,525	5,505	7,015	4,775	5,040	4,470	2,155	565
0080*	25,070	2810	1430	7910	8545	1165	2800	410
0082*	38,990	5815	3435	8625	14220	2395	4075	425
0084	21,470	4555	5830	3925	4040	965	2000	155
0092*	61,715	6660	3045	26375	17340	2085	5360	840
0094	42,715	7445	4295	14870	10385	1495	3645	570
0095	18,035	3735	2680	2360	3480	3255	1970	550
0096	50,490	8345	10965	13960	10030	2055	4550	580
0100*	39,635	3175	2585	15115	10975	1655	5110	1020
0101	38,890	6610	5485	9400	7820	3385	5095	1095
0102	55,045	6330	7575	20135	12285	1620	6855	245
0104	46,555	3895	3465	22300	9020	1220	6315	350
0109	37,930	11925	12095	3415	6130	1640	2485	250
011201	11665	1190	2925	3145	1565	775	2025	45
011202	21,105	2860	4995	5730	5115	430	1875	95
011203*	8,745	690	1130	2665	1815	580	1715	150
0113	33,975	11030	9315	5895	4000	1090	2470	185
0119	42,135	3465	2090	15375	9720	1125	8840	1520
0125	42,560	3440	3265	20865	7175	725	6670	415
0131	47,450	2560	1630	18425	16390	1075	6895	470
0137	36,560	3120	3000	9875	9175	2695	8170	535

*Census tract is within two or more community districts. Data are for entire census tract.

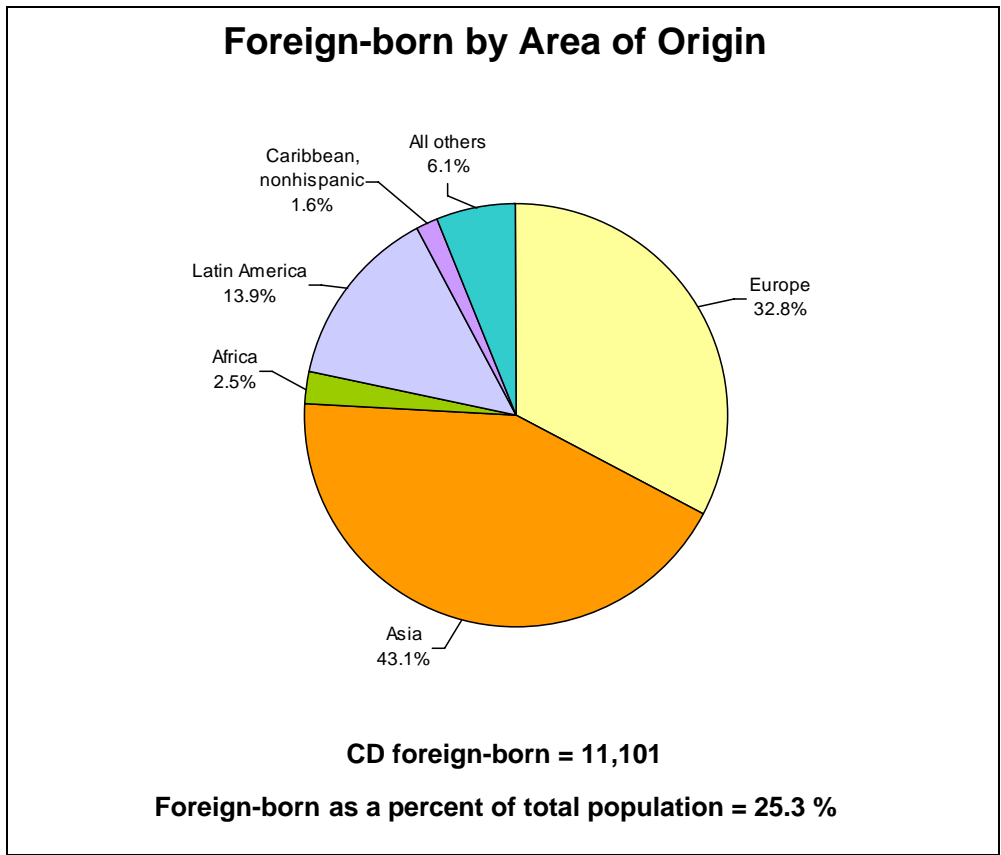
**Includes forestry, fishing, hunting & mining.



Note: CD percentages are approximations based on the sum of whole census tracts which do not represent exact CD boundaries.

Table continues on next page.

**Foreign-born Population
Census 2000
Manhattan Community District 5**



**Foreign-born Rank Ordered
by Country of Birth**

	NUMBER	PERCENT
TOTAL, Foreign-born	11,101	100.0
China*	1,138	10.3
Japan	1,101	9.9
Korea	1,019	9.2
United Kingdom	602	5.4
Germany	506	4.6
Canada	443	4.0
India	428	3.9
Italy	348	3.1
Philippines	306	2.8
France	283	2.5
All Others	4,927	44.4

*China includes the Mainland, Hong Kong and Taiwan

**Language Proficiency
Census 2000
Manhattan Community District 5**

	Number	Percent
Total Population 5 Years and Over	42,761	100.0
Proficient in English	38,942	91.1
Not Proficient in English	3,819	8.9
Not Proficient in English	3,819	100.0
Language Spoken at Home:		
Spanish or Spanish Creole	771	20.2
Chinese	639	16.7
Japanese	610	16.0
Korean	559	14.6
French (incl Patois, Cajun, French Creole)	270	7.1
Italian	116	3.0
All Others	854	22.4

**Selected Facilities and Program Sites
In New York City, 2002-2005**

MANHATTAN COMMUNITY DISTRICT 5

<u>Block</u>	<u>Lot</u>	<u>Facility Name</u>	<u>Facility Address</u>	<u>Facility Type</u>	<u>Capacity</u>	<u>Oversight Agency</u>
SCHOOLS						
<i>Public Elementary and Secondary Schools</i>						
848	7502	BALLET TECH SCHOOL	890 Broadway	Junior/Senior High School - Public	155 Enrollment	NYC DOE
998	41	JACQUELINE KENNEDY-ONASSIS HIG	120 W 46 St	Junior/Senior High School - Public	638 Enrollment	NYC DOE
855	16	SCHOOL FOR THE PHYSICAL CITY	55 E 25th St	Junior/Senior High School - Public	324 Enrollment	NYC DOE
878	16	SCHOOL OF THE FUTURE	127 E 22nd St	Junior/Senior High School - Public	623 Enrollment	NYC DOE
874	1	BARUCH COLLEGE CAMPUS HIGH SC	111 E 18th St	High School - Public	403 Enrollment	NYC DOE
1029	43	COALITION SCHOOL FOR SOCIAL CH	220 W 58 St	High School - Public	394 Enrollment	NYC DOE
858	49	COMMUNITY HIGH SCHOOL	40 E 29th St	High School - Public	63 Enrollment	NYC DOE
1029	43	LANDMARK HIGH SCHOOL	220 W 58 St	High School - Public	398 Enrollment	NYC DOE
824	15	MANHATTAN VILLAGE ACADEMY	43 W 22 St	High School - Public	326 Enrollment	NYC DOE
889	1	NORMAN THOMAS HIGH SCHOOL	111 E 33 St	High School - Public	2748 Enrollment	NYC DOE
996	21	PUBLIC SCHOOL REPERTORY COMPA	123 W 43 St	High School - Public	222 Enrollment	NYC DOE
805	71	SATELLITE ACADEMY HIGH SCHOOL	120 W 30 St	High School - Public	837 Enrollment	NYC DOE
858	49	BOROUGH ACADEMIES	40 E 29 St	Special/Other School - Public	31 Enrollment	NYC DOE
<i>Private & Parochial Elementary and Secondary Schools</i>						
818	3	JOHN A. COLEMAN SCHOOL	590 Ave Of Americas	Elementary School - Private/Parochial	59 Enrollment	NYS DOE
846	33	NYSARC, INC.- NEW YORK CITY CHA	200 Park Ave S	Elementary School - Private/Parochial	435 Enrollment	NYS DOE
1029	37	SAINT THOMAS CHOIR SCHOOL	202 W 58 St	Elementary School - Private/Parochial	32 Enrollment	NYS DOE
841	80	DAYTOP PREPARATORY SCHOOL	54 W 40 St	Junior/Senior High School - Private/Parochial	147 Enrollment	NYS DOE
817	72	XAVIER HIGH SCHOOL	30 W 16 St	Senior High School - Private/Parochial	913 Enrollment	NYS DOE
819	56	ASSOCIATION IN MANHATTAN FOR	25 W 17 St	Special/Other School - Private/Parochial	160 Enrollment	NYS DOE
778	70	LEARNING SPRING ELEMENTARY SC	254 W 29th St	Special/Other School - Private/Parochial	49 Enrollment	NYS DOE
<i>Colleges and Other Post-Secondary Institutions</i>						
777	18	FASHION INSTITUTE OF TECHNOLOG	227 W 27 St	Public College - SUNY	10765 Enrollment	NYS DOE
854	7501	NYS COLLEGE OF OPTOMETRY (SUN	33 E 24 St	Public College - SUNY	291 Enrollment	NYS DOE
864	7502	CUNY GRAD SCHOOL&UNIVERSITY	365 Fifth Ave	Public College - CUNY	4108 Enrollment	CUNY

**Selected Facilities and Program Sites
In New York City, 2002-2005**

MANHATTAN COMMUNITY DISTRICT 5

<u>Block</u>	<u>Lot</u>	<u>Facility Name</u>	<u>Facility Address</u>	<u>Facility Type</u>	<u>Capacity</u>	<u>Oversight Agency</u>
<i>Colleges and Other Post-Secondary Institutions</i>						
860	16	AMERICAN ACADEMY OF DRAMATIC	120 Madison Ave	Independent - Degree Granting Institution	218 Enrollment	NYS DOE
835	41	KING'S COLLEGE	350 Fifth Ave	Independent - Degree Granting Institution	179 Enrollment	NYS DOE
831	30	NEW YORK THEOLOGICAL SEMINAR	5 W 29 St	Independent - Degree Granting Institution	298 Enrollment	NYS DOE
825	29	TOURO COLLEGE	23-27 W 23 St	Independent - Degree Granting Institution	13122 Enrollment	NYS DOE
1278	8	BERKELEY COLLEGE	3 E 43 St	Proprietary - Degree Granting Institution	2495 Enrollment	NYS DOE
841	75	KATHERINE GIBBS SCHOOL	50 W 40 St	Proprietary - Degree Granting Institution	3641 Enrollment	NYS DOE
1288	63	LABORATORY INST OF MERCHANDIS	12 E 53 St	Proprietary - Degree Granting Institution	493 Enrollment	NYS DOE
849	70	PACIFIC COLLEGE OF ORIENTAL ME	915 Broadway	Proprietary - Degree Granting Institution	411 Enrollment	NYS DOE
1012	1	TAYLOR BUSINESS INSTITUTE	269 W 40 St	Proprietary - Degree Granting Institution	898 Enrollment	NYS DOE
869	66	WOOD/TOBECOBURN SCHOOL	8 E 40 St	Proprietary - Degree Granting Institution	440 Enrollment	NYS DOE

RECREATIONAL AND CULTURAL FACILITIES

<i>Libraries and Cultural Institutions</i>						
1313	5	FIFTY-EIGHTH ST. LIBRARY	127 East 58 St	Public Library - Branch	271961 Annual Circ.	NYPL
821	7501	MUHLENBERG LIBRARY	40 W 20 St	Public Library - Branch	172941 Annual Circ.	NYPL
1305	13	TERENCE CARDINAL COOKE-CATHE	560 Lexington Ave	Public Library - Branch	130215 Annual Circ.	NYPL
821	7501	ANDREW HEISKELL LIBRARY FOR T	40 W 20 St	Public Library - Central	353089 Annual Circ.	NYPL
1268	50	DONNELL LIBRARY CENTER	20 W 53 St	Public Library - Central	1249636 Annual Circ.	NYPL
869	74	MID-MANHATTAN LIBRARY	455 Fifth Ave	Public Library - Central	1983884 Annual Circ.	NYPL
1257	1	NEW YORK PUBLIC LIBRARY	476 Fifth Ave	Public Library - Central	NA	NYPL
864	7502	SCIENCE, INDUSTRY, AND BUSINESS	188 Madison Ave	Public Library - Central	121744 Annual Circ.	NYPL
1009	1	CARNEGIE HALL	881 Seventh Ave	NYC Cultural Institution	716391 Annual Visits	NYC DCA
1008	15	CITY CENTER	131 West 55th St	NYC Cultural Institution	312682 Annual Visits	NYC DCA

<i>Parks</i>						
		BRYANT PARK	Bet 5 & 6 Aves, W 40 & W 42 Sts	Park/Playground - NYC	9.603 Acres	NYC DPR
		CENTRAL PARK	5 Ave - Central Park W, 59 - 110 Sts	Park/Playground - NYC	840.01 Acres	NYC DPR
		MADISON SQUARE PARK	Broadway to Madison Ave, E 23 to E 26	Park/Playground - NYC	6.234 Acres	NYC DPR
		UNION SQUARE	Broadway to 4 Ave, E 14 St to E 17 Sts	Park/Playground - NYC	3.593 Acres	NYC DPR

**Selected Facilities and Program Sites
In New York City, 2002-2005**

MANHATTAN COMMUNITY DISTRICT 5

<u>Block</u>	<u>Lot</u>	<u>Facility Name</u>	<u>Facility Address</u>	<u>Facility Type</u>	<u>Capacity</u>	<u>Oversight Agency</u>
<i>Parks</i>						
		DUFFY SQUARE (T)	Broadway, W 46 to W 47 Sts, 7 Ave	Triangle, Strip, Plaza, or Sitting Area - NYC	0.076 Acres	NYC DPR
		GRAND ARMY PLAZA	5 Ave, W 58 to W 60 Sts	Triangle, Strip, Plaza, or Sitting Area - NYC	0.625 Acres	NYC DPR
		GREELEY SQUARE	Broadway, Ave of Americas, Bet W 32	Triangle, Strip, Plaza, or Sitting Area - NYC	0.144 Acres	NYC DPR
		HERALD SQUARE	Broadway, Ave of Americas, Bet W 34	Triangle, Strip, Plaza, or Sitting Area - NYC	0.042 Acres	NYC DPR
		PARK AVE CENTER PLOTS	E 47 to E 59 Sts & Park Ave	Triangle, Strip, Plaza, or Sitting Area - NYC	1.58 Acres	NYC DPR
		PARK AVE CENTER PLOTS	E 34 St to E 40 St, E 46 St to E 97 St	Triangle, Strip, Plaza, or Sitting Area - NYC	6.78 Acres	NYC DPR
		PARK AVE CENTER PLOTS	E 34 St to E 39 St & Park Ave	Triangle, Strip, Plaza, or Sitting Area - NYC	0.65 Acres	NYC DPR
		WORTH SQUARE (T)	Broadway, 5 Ave, W 24 to W 25 Sts	Triangle, Strip, Plaza, or Sitting Area - NYC	0.076 Acres	NYC DPR
		PARK AVE CENTER PLOTS	E 17 St to E 32 St & Park Ave South	Joint NYCDOT/DPR Landscaped Area	0.275 Acres	NYC DOT
		THEODORE ROOSEVELT BIRTHPLAC	28 E 20 St	National Park	0.11 Acres	NPS

PUBLIC SAFETY AND CRIMINAL JUSTICE FACILITIES

805	82	MANHATTAN TRAFFIC CONTROL DI	138 W 30 St	Other NYPD Facility	NA	NYPD
805	82	MOVIE & TV UNIT	138 W 30 St	Other NYPD Facility	NA	NYPD
806	66	ENGINE 1 LADDER 24 D.O. 3	142 W 31 St	NYC Fire House	NA	FDNY
846	66	ENGINE 14	14 E 18 St	NYC Fire House	NA	FDNY
1030	23	ENGINE 23	215 W 58 St	NYC Fire House	NA	FDNY
786	61	ENGINE 26	220 W 37 St	NYC Fire House	NA	FDNY
1019	61	ENGINE 54 LADDER 4 BATTALION 9	782 Eighth Ave	NYC Fire House	NA	FDNY
1259	18	ENGINE 65	33 W 43 St	NYC Fire House	NA	FDNY
855	1	NYS SUPREME COURT - APPELLATE	27 Madison Ave	State/City Court	NA	NYS OCA

HOSPITALS, NURSING HOMES, AND AMBULATORY PROGRAMS

Nursing Homes and Hospital Inpatient Units

818	3	NEW YORK FOUNDLING HOSP CTR F	590 Sixth Ave	Residential Health Care Facility	136 Beds	NYS DOH
-----	---	-------------------------------	---------------	----------------------------------	----------	---------

Ambulatory Facilities and Programs

846	33	AHRC HEALTHCARE, INC.	200 Park Ave South	Free Standing Health Center	NA	NYS DOH
-----	----	-----------------------	--------------------	-----------------------------	----	---------

**Selected Facilities and Program Sites
In New York City, 2002-2005**

MANHATTAN COMMUNITY DISTRICT 5

<u>Block</u>	<u>Lot</u>	<u>Facility Name</u>	<u>Facility Address</u>	<u>Facility Type</u>	<u>Capacity</u>	<u>Oversight Agency</u>
<i>Ambulatory Facilities and Programs</i>						
824	42	COMMUNITY FAMILY PLANNING CO	184 Fifth Ave	Free Standing Health Center	NA	NYS DOH
825	1	LEAGUE FOR THE HARD OF HEARING	71 W 23 St	Free Standing Health Center	NA	NYS DOH
859	52	PARKMED/EASTERN WOMEN'S CENT	38 E 30 St	Free Standing Health Center	NA	NYS DOH
843	39	SIDNEY HILLMAN FAMILY PRACTICE	16 E 16 St	Free Standing Health Center	NA	NYS DOH
878	15	UNITED CEREBRAL PALSY OF NEW Y	122 E 23 St	Free Standing Health Center	NA	NYS DOH
842	34	UNITED WIRE METAL & MACHINE M	10 E 15 St	Free Standing Health Center	NA	NYS DOH
1294	46	MT SINAI SPORTS THERAPY CENTER	625 Madison Ave	Hospital Affiliated Health Center	NA	NYS DOH
870	7501	PHILLIPS AMBULATORY CARE CENT	10 Union Square E	Hospital Affiliated Health Center	NA	NYS DOH
843	39	PHILLIPS FAMILY PRACTICE	16 E 16 St	Hospital Affiliated Health Center	NA	NYS DOH
780	17	THE CHELSEA HEALTH SERVICES	241 W 30 St	Hospital Affiliated Health Center	NA	NYS DOH

ALCOHOLISM & SUBSTANCE ABUSE SERVICES

<i>Residential</i>						
1273	1	MEDICAL ARTS HOSP-ALCOHOL PRI	57 W 57 St	Inpatient Detox/Withdrawal - Alcoholism	62 Beds	NYS OMH
1273	1	MEDICAL ARTS HOSPITAL- S.A. INPT	57 W 57 St	Inpatient Rehabilitation - Alcoholism	2 Beds	NYS OMH
1273	1	MEDICAL ARTS HOSPITAL-ALCSM IN	57 W 57 St	Inpatient Rehabilitation - Alcoholism	33 Beds	NYS OMH
1273	1	MEDICAL ARTS HOSPITAL- MED. MG	57 W 57 St	Community-Based Residence - Sub Abuse	5 Beds	NYS OMH
841	80	DAYTOP VILLAGE INC - DRUG FREE	54 W 40 St	Drug Free Community Residence - Sub Abuse	35 Beds	NYS OMH

<i>Non-Residential</i>						
998	12	AREBA/CASRIEL INST.- DRUG ABUSE	145 W 45 St	Med Supervised Outp Svc - Alcohol/Sub Abuse	250 Cert. Caseload	NYS OASAS
998	12	AREBA/CASRIEL INSTITUTE - ALCSM	145 W 45 St	Med Supervised Outp Svc - Alcohol/Sub Abuse	NA	NYS OASAS
862	16	BLISS-POSTON/2ND WIND- DRUG ABS	152 Madison Ave	Med Supervised Outp Svc - Alcohol/Sub Abuse	75 Cert. Caseload	NYS OASAS
821	14	CENTER COMM/ALTERNATIVES-MED	39 W 19 St	Med Supervised Outp Svc - Alcohol/Sub Abuse	140 Cert. Caseload	NYS OASAS
1313	5	CTR MARITAL/FAM. THERAPY- ALCS	113 E 58 St	Med Supervised Outp Svc - Alcohol/Sub Abuse	NA	NYS OASAS
785	1	DAYTOP VILLAGE INC - MED SUP OP-	500 Eighth Ave	Med Supervised Outp Svc - Alcohol/Sub Abuse	450 Cert. Caseload	NYS OASAS
802	8	EXPONENTS, INC. - MED SUP OP-SA	151 W 26 St	Med Supervised Outp Svc - Alcohol/Sub Abuse	25 Cert. Caseload	NYS OASAS
1289	21	FREEDOM INSTITUTE INC. - ALCSM C	515 Madison Ave	Med Supervised Outp Svc - Alcohol/Sub Abuse	NA	NYS OASAS
855	7501	INTER-CARE,INC. - ALCSM CLINIC	51 E 25 St	Med Supervised Outp Svc - Alcohol/Sub Abuse	NA	NYS OASAS

**Selected Facilities and Program Sites
In New York City, 2002-2005**

MANHATTAN COMMUNITY DISTRICT 5

<u>Block</u>	<u>Lot</u>	<u>Facility Name</u>	<u>Facility Address</u>	<u>Facility Type</u>	<u>Capacity</u>	<u>Oversight Agency</u>
<i>Non-Residential</i>						
1273	1	MEDICAL ARTS CTR HOSP - MED SUP	57 W 57 St	Med Supervised Outp Svc - Alcohol/Sub Abuse	200 Cert. Caseload	NYS OASAS
1273	1	MEDICAL ARTS HOSPITAL - ALCSM C	57 W 57 St	Med Supervised Outp Svc - Alcohol/Sub Abuse	NA	NYS OASAS
1260	64	MEDICAL COLLEGE/CORNELL UNIV-	56 W 45 St	Med Supervised Outp Svc - Alcohol/Sub Abuse	100 Cert. Caseload	NYS OASAS
785	1	NYC DEPT PROBATION -DAYTOP VI	500 Eighth Ave	Med Supervised Outp Svc - Alcohol/Sub Abuse	100 Cert. Caseload	NYS OASAS
812	56	NYC DEPT PROBATION - MED SUP OP	1369 Broadway -	Med Supervised Outp Svc - Alcohol/Sub Abuse	25 Cert. Caseload	NYS OASAS
846	33	NYS ASSOC/RETARDED CHLDRN-AL	200 Park Ave South	Med Supervised Outp Svc - Alcohol/Sub Abuse	NA	NYS OASAS
843	20	REALIZATION CENTER, INC- MED SU	19 Union Square West	Med Supervised Outp Svc - Alcohol/Sub Abuse	90 Cert. Caseload	NYS OASAS
812	56	T.R.I. CENTER, INC. - MED SUP OP-SA	1369 Broadway	Med Supervised Outp Svc - Alcohol/Sub Abuse	125 Cert. Caseload	NYS OASAS
1275	16	VILLA OPC II - OUP T DRUG ABUSE CL	290 Madison Ave	Med Supervised Outp Svc - Alcohol/Sub Abuse	100 Cert. Caseload	NYS OASAS
1275	16	VILLA OPC II, INC. - ALCOHOLISM CL	290 Madison Ave	Med Supervised Outp Svc - Alcohol/Sub Abuse	NA	NYS OASAS
807	50	WOMEN IN NEED, INC. - MED SUP OP-	115 W 31 St	Med Supervised Outp Svc - Alcohol/Sub Abuse	30 Cert. Caseload	NYS OASAS
998	12	AREBA/CASRIEL INSTITUTE - M.S. WI	145 W 45 St	Med Supervised Crisis Svc - Alcohol/Sub Abuse	35 Cert. Caseload	NYS OASAS
1273	1	MEDICAL ARTS HOSPITAL - M.S. WIT	57 W 57 St	Med Supervised Crisis Svc - Alcohol/Sub Abuse	20 Cert. Caseload	NYS OASAS
1275	16	VILLA OPC II(THE) - M.S. WITH/OP	290 Madison Ave	Med Supervised Crisis Svc - Alcohol/Sub Abuse	15 Cert. Caseload	NYS OASAS
785	1	DAYTOP VILLAGE CRIM. JUSTICE RE	500 Eighth Ave	Non-Med Supervised Outp Svc - Alc/Sub Abuse	40 Cert. Caseload	NYS OASAS
785	1	DAYTOP VILLAGE, INC. - D.F. OUTPA	500 Eighth Ave	Non-Med Supervised Outp Svc - Alc/Sub Abuse	150 Cert. Caseload	NYS OASAS
821	14	FORTUNE SOCIETY INC- OUTPT DRU	39 W 19 St	Non-Med Supervised Outp Svc - Alc/Sub Abuse	194 Cert. Caseload	NYS OASAS
821	14	NYC DEPT PROBATION -FORTUNE S	39 W 19 St	Non-Med Supervised Outp Svc - Alc/Sub Abuse	60 Cert. Caseload	NYS OASAS
821	58	GREENWICH HOUSE, INC. - METHAD	24 W 20 St	Outpatient Methadone Treatment - Sub Abuse	50 Cert. Caseload	NYS OASAS
873	67	BIMC-OPD 3-C MMTP CLINIC-S	215 Park Ave South	Methadone Treatment Clinic - Sub Abuse	15 Cert. Caseload	NYS OASAS
821	58	GREENWICH HOUSE, INC. - MMTP CLI	24 W 20 St	Methadone Treatment Clinic - Sub Abuse	350 Cert. Caseload	NYS OASAS
784	19	EMPLOYMENT PGM FOR RECOVERE	225 W 34 St	Vocational Rehab - Alcoholism/Sub Abuse	NA	NYC DOHM

MENTAL HEALTH SERVICES

<i>Non-Residential</i>						
831	30	BLANTON-PEALE COUNSELING CENT	3 W 29 St	Mental Health Clinic/Day Treatment	NA	NYS OMH
1313	14	CENTER FOR MARITAL AND FAMILY	133 E 58 St	Mental Health Clinic/Day Treatment	NA	NYS OMH
802	56	GREENWICH HOUSE AIDS MENTAL H	122 W 27 St	Mental Health Clinic/Day Treatment	NA	NYS OMH

**Selected Facilities and Program Sites
In New York City, 2002-2005**

MANHATTAN COMMUNITY DISTRICT 5

<u>Block</u>	<u>Lot</u>	<u>Facility Name</u>	<u>Facility Address</u>	<u>Facility Type</u>	<u>Capacity</u>	<u>Oversight Agency</u>
<i>Non-Residential</i>						
857	38	JBFCS-YCL MENTAL HEALTH CLINIC	386 Park Ave S	Mental Health Clinic/Day Treatment	NA	NYS OMH
825	1	LEAGUE FOR THE HARD OF HEARING	71 W 23 St	Mental Health Clinic/Day Treatment	NA	NYS OMH
1009	44	MADELEINE BORG MANHATTAN WE	120 W 57 St	Mental Health Clinic/Day Treatment	NA	NYS OMH
807	50	MCMURRAY CLINIC	115 W 31 St	Mental Health Clinic/Day Treatment	NA	NYS OMH
1009	44	JBFCS CHILD DEVELOPMENT CENTE	120 W 57 St	Mental Health Clinic/Day Treatment	25 Cert. Caseload	NYS OMH
819	56	THE CHILDREN'S HOUSE	25 W 17 St	Mental Health Clinic/Day Treatment	21 Cert. Caseload	NYS OMH
784	51	FEDCAP REHABILITATION SERVICE	212 W 35 St	Vocational/Social Training - Mental Health	NA	NYC DOHM

MENTAL RETARDATION & DEVELOPMENTAL DISABILITIES SERVICES

<i>Residential</i>						
886	7503	ASSN. FOR HELP OF RETARD. CHILD.	127 E 30 St	Residential Alternative - MR/DD	10 Beds	NYS OMRDD
<i>Non-Residential</i>						
825	24	LIFESPIRE, INC.	27 W 23 St	Clinic/Day Treatment - MR/DD	44 Cert. Caseload	NYS OMRDD
878	15	UCP OF NEW YORK CITY, INC.	122 E 23 St	Clinic/Day Treatment - MR/DD	38 Cert. Caseload	NYS OMRDD
819	56	ASSOC IN MANHATTAN FOR AUTISTI	25 W 17 St	Day Training - MR/DD	30 Cert. Caseload	NYS OMRDD
857	65	YOUNG ADULT INSTITUTE AND WOR	22 E 28 St	Day Training - MR/DD	NA	NYC DOHM
846	33	ASSN F/HELP OF RETARDED CHILD.	200 Park Ave S	Clinic/Day Treatment - MR/DD	NA	NYS OMRDD
876	6	EPILEPSY INSTITUTE, INC.	257 Park Ave S	Clinic/Day Treatment - MR/DD	NA	NYS OMRDD
778	70	ASSN F/HELP OF RETARDED CHILD.	252-254 W 29 St	Day Training/Preschool Program - MR/DD	25 Cert. Caseload	NYS OMRDD
819	56	ASSOC IN MANHATTAN FOR AUTISTI	25 W 17 St	Day Training/Preschool Program - MR/DD	16 Cert. Caseload	NYS OMRDD
876	6	EPILEPSY INSTITUTE, INC.	257 Park Ave S	Day Training/Preschool Program - MR/DD	12 Cert. Caseload	NYS OMRDD
825	24	LIFESPIRE, INC	27 W 23 St	Day Training/Preschool Program - MR/DD	65 Cert. Caseload	NYS OMRDD
878	15	UCP OF NEW YORK CITY, INC.	122 E 23 St	Day Training/Preschool Program - MR/DD	133 Cert. Caseload	NYS OMRDD
878	15	UCP OF NEW YORK CITY, INC.	122 E 23 St	Day Rehabilitation - MR/DD	60 Cert. Caseload	NYS OMRDD
825	24	LIFESPIRE, INC	27 W 23 St	Day Training/Workshop - MR/DD	40 Cert. Caseload	NYS OMRDD
878	65	UCP OF NEW YORK CITY, INC.	120 E 23 St	Day Training/Workshop - MR/DD	50 Cert. Caseload	NYS OMRDD
839	60	JOB PATH, INC.	22 W 38 St	Supported/Transitional Employment - MRDD	NA	NYC DOHM

**Selected Facilities and Program Sites
In New York City, 2002-2005**

MANHATTAN COMMUNITY DISTRICT 5

<u>Block</u>	<u>Lot</u>	<u>Facility Name</u>	<u>Facility Address</u>	<u>Facility Type</u>	<u>Capacity</u>	<u>Oversight Agency</u>
DAYCARE AND RESIDENTIAL FACILITIES FOR CHILDREN						
<i>Residential</i>						
818	3	BLAINE HALL	590 Sixth Ave	Group Foster Residence	15 Beds	NYC ACS
818	3	MATERNITY SHELTER	590 Sixth Ave	Group Foster Residence	22 Beds	NYC ACS
<i>Daycare and Headstart Facilities</i>						
878	15	MANHATTAN CHILDREN'S PROGRAM	122 E 23 St	Group Day Care - Public	98 Children	NYC DOHM
819	56	AMAC CHILDREN'S CENTER	25 W 17 St	Group Day Care - Private	90 Children	NYC DOHM
874	1	BARUCH COLLEGE ELC INC.	104 E 19 St	Group Day Care - Private	30 Children	NYC DOHM
1310	10	CENTRAL SYNAGOGUE NURSERY SC	123 E 55 St	Group Day Care - Private	97 Children	NYC DOHM
1009	44	CHILD DEVELOPMENT CENTER	120 W 57 St	Group Day Care - Private	35 Children	NYC DOHM
995	5	CHILDREN'S FIRST OF TIME SQUARE	4 Times Square	Group Day Care - Private	14 Children	NYC DOHM
844	11	EAST CHELSEA CHILDREN'S WKSP	17 E 16 St	Group Day Care - Private	29 Children	NYC DOHM
864	7502	GSU CHILD DEVELOPMENT AND LEA	365 Fifth Ave	Group Day Care - Private	27 Children	NYC DOHM
818	3	JOHN A. COLEMN	590 Sixth Ave	Group Day Care - Private	48 Children	NYC DOHM
833	18	MANHATTAN NURSERY SCHOOL	38 W 32 St	Group Day Care - Private	18 Children	NYC DOHM
1305	1	ST. BARTHOLOMEN COMMUNITY	109 E 50 St	Group Day Care - Private	59 Children	NYC DOHM
848	1	YAI/NYL GRAMERCY SCHOOL	3 E 19 St	Group Day Care - Private	165 Children	NYC DOHM
816	59	YOUR KIDS, OUR KID PRE-SCHOOL	30 W 15 St	Group Day Care - Private	58 Children	NYC DOHM
1307	59	YWCA EARLY LEARNING CENTER	610 Lexington Ave	Group Day Care - Private	73 Children	NYC DOHM
1283	58	CHASE BACK UP CC PRES	18 E 48 St	Group Day Care - Corporate	46 Children	NYC DOHM
1264	30	CHILDREN FIRST ON 5TH AVE.	600 Fifth Ave	Group Day Care - Corporate	33 Children	NYC DOHM
1258	9	LIPTON CORPORATE CC	1114 Ave of the Americas	Group Day Care - Corporate	31 Children	NYC DOHM
1280	9010	THE CHILDRENS CENTER AT 200 PAR	200 Park Ave	Group Day Care - Corporate	20 Children	NYC DOHM
856	24	THE CHILDREN'S CENTER AT N.Y. LIF	51 Madison Ave	Group Day Care - Corporate	30 Children	NYC DOHM
1003	29	THE CHILDREN'S CENTER AT TIME W	1271 Ave of the Americas	Group Day Care - Corporate	6 Children	NYC DOHM
1266	1	THE CHILDREN'S CTR ON 5TH AVE	630 Fifth Ave	Group Day Care - Corporate	16 Children	NYC DOHM
1003	29	THE CHILDREN'S CTR. AT TIME WAR	1271 Ave of Americas	Group Day Care - Corporate	6 Children	NYC DOHM
1308	7502	THE CITIGROUP CHILDREN'S CENTER	399 Park Ave	Group Day Care - Corporate	30 Children	NYC DOHM

**Selected Facilities and Program Sites
In New York City, 2002-2005**

MANHATTAN COMMUNITY DISTRICT 5

<u>Block</u>	<u>Lot</u>	<u>Facility Name</u>	<u>Facility Address</u>	<u>Facility Type</u>	<u>Capacity</u>	<u>Oversight Agency</u>
FACILITIES FOR SENIORS						
1021	9	ENCORE LUNCHEON CLUB	239 West 49th St	Senior Center	8490 Av. Meals/Month	NYC DFTA
859	12	MURRAY HILL SRO	11 East 29th St	Senior Center	690 Av. Meals/Month	NYC DFTA
996	14	PROJECT FIND WOODSTOCK SR CTR	127 W 43 St	Senior Center	4020 Av. Meals/Month	NYC DFTA
RESIDENTIAL FACILITIES AND FOOD PROGRAMS FOR ADULTS & FAMILIES						
<i>Residential</i>						
1020	49	ENCORE COMM. SVC (ENCORE 49 RE	220 W 49 St	DHS-Contracted Supportive SRO Housing	79 Singles Units	NYC DHS
857	66	PRINCE GEORGE SRO	14 E 28 St	DHS-Contracted Supportive SRO Housing	208 Singles Units	NYC DHS
880	16	ST FRANCIS FRIENDS OF THE POOR	125 E 24 St	DHS-Contracted Supportive SRO Housing	89 Singles Units	NYC DHS
996	14	THE WOODSTOCK HOTEL	127 W 43 St	DHS-Contracted Supportive SRO Housing	280 Singles Units	NYC DHS
1015	1	TIMES SQUARE HOTEL	255 W 43 St	DHS-Contracted Supportive SRO Housing	413 Singles Units	NYC DHS
880	73	FRIENDS HOME GROUP	54-58 Lexington Ave	HPD-Assisted Supportive Housing - Adults	50 Singles Units	NYC HPD
881	6	LEXINGTON AVENUE ARMORY	68 Lexington Ave	Shelter For Singles - DHS Contracted	164 Beds	NYC DHS
789	78	TRAVELERS HOTEL	274 W 40 St	Shelter For Singles - DHS Contracted	36 Beds	NYC DHS
857	75	ICAN HOUSE EAST	4 E 28 St	Family Homeless Facility - DHS Contracted	92 Family Units	NYC DHS
<i>Food Programs and Drop-In Centers</i>						
1310	10	CENTRAL SYNGOGUE CARING COM	123 E 55 St	Soup Kitchen	NA	NA
803	7502	PARTNERSHIP FOR THE HOMELESS	305 7 Ave	Soup Kitchen	NA	NA
779	57	FROST'D OUTREACH	224 W 30 St	Food Pantry	NA	NA
859	12	MURRAY HILL SRO PROJECT	11 E 29 St	Food Pantry	NA	NA
780	45	ST. JOHN'S BREAD OF LIFE	210 W 31 St	Food Pantry	NA	NA
1009	44	JEWISH BOARD OF FAMILIES	120 W. 57 St	Joint Soup Kitchen & Food Pantry	NA	NA
776	1	MOMENTUM PROJECT INC. @ LEX A	322 8 Ave	Joint Soup Kitchen & Food Pantry	NA	NA
776	1	MOMENTUM@ST CECELIA'S CHURC	322 8 Ave	Joint Soup Kitchen & Food Pantry	NA	NA
1305	1	ST. BARTHOLOMEW'S CHURCH	109 E 50 St	Joint Soup Kitchen & Food Pantry	NA	NA
817	72	ST. FRANCIS XAVIER	55 W 15 St	Joint Soup Kitchen & Food Pantry	NA	NA

Selected Facilities and Program Sites
In New York City, 2002-2005

MANHATTAN COMMUNITY DISTRICT 5

<u>Block</u>	<u>Lot</u>	<u>Facility Name</u>	<u>Facility Address</u>	<u>Facility Type</u>	<u>Capacity</u>	<u>Oversight Agency</u>
<i>Food Programs and Drop-In Centers</i>						
780	9	OLIVIERI CENTER FOR HOMELESS	257 W 30 St	Drop-In Center (Homeless)	90 Av. Visits/Day	NYC DHS